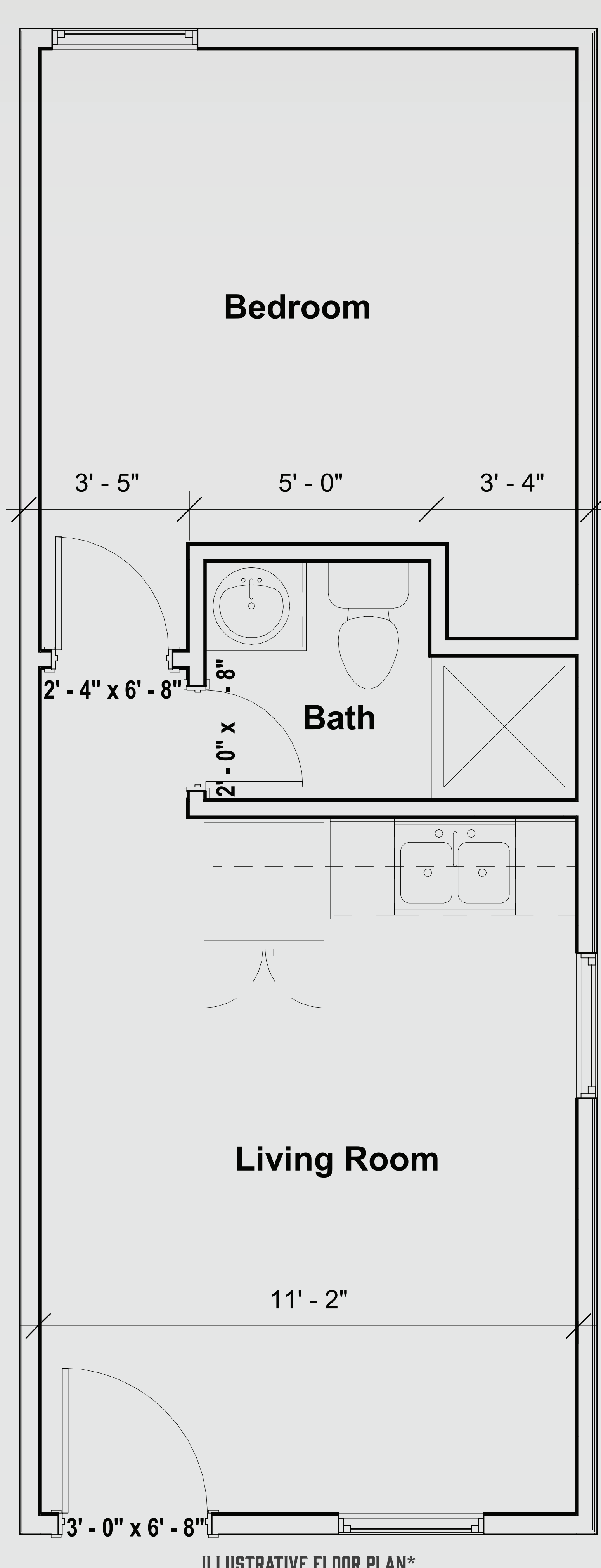
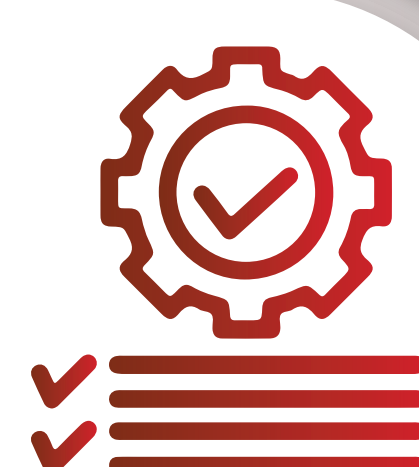


TINY HOME

12'X32'/384 SQFT
3' FRONT PORCH



FEATURES



HERS
RATING OF S6 IN OKC

SPRAY FOAM
INSULATED

12,000 BTU
MINI-SPLIT

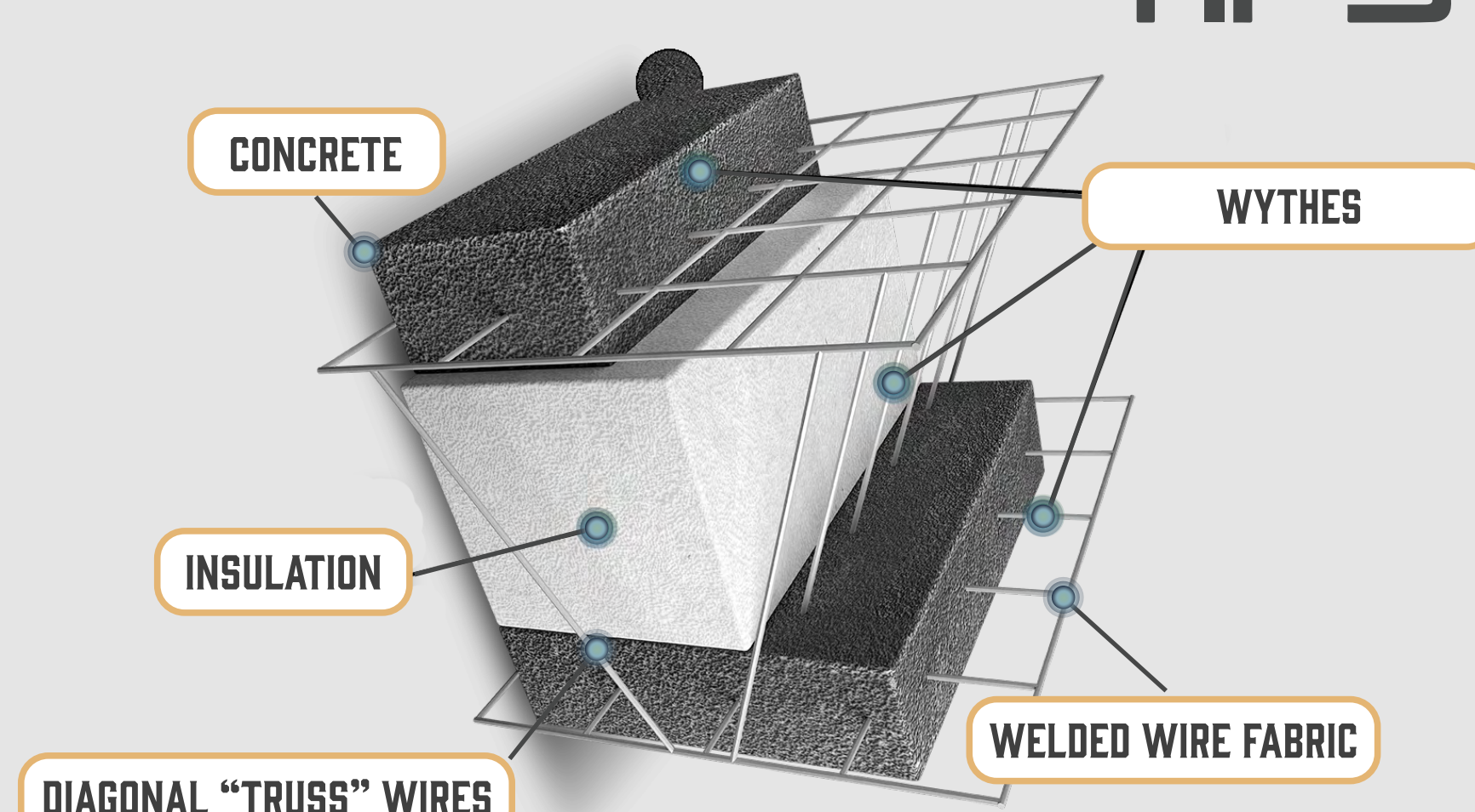
50 AMP
ELECTRICAL PANEL

CEMENT BASED
SIDING EXTERIOR



BUILT ON A 8"
INSULATED
CONCRETE SLAB

DOLESE



SET & WELDED TO
HELICAL PIERS



ILLUSTRATIVE RENDERING*



BUILT TO THE
2018 IRC CODE

THIRD PARTY INSPECTED BY



INTERNATIONAL
CODE
COUNCIL®

\$50,000

PLUS DELIVERY AND INSTALL
(MINIMUM ORDER OF 10 UNITS)

*PRICES AND SPECS SUBJECT TO CHANGE

WWW.THEHOUSEFACTORY.NET